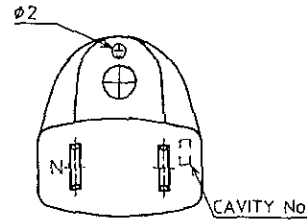
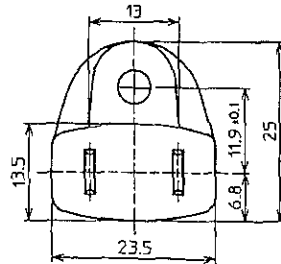
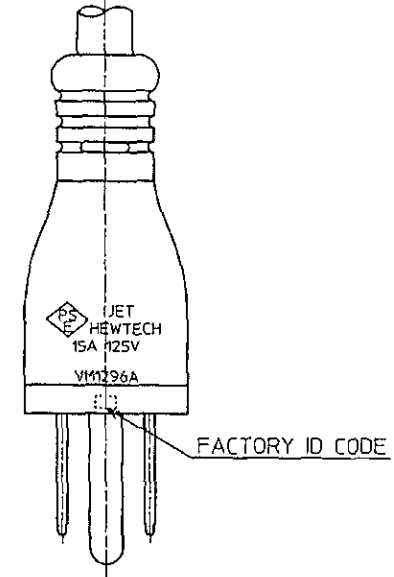
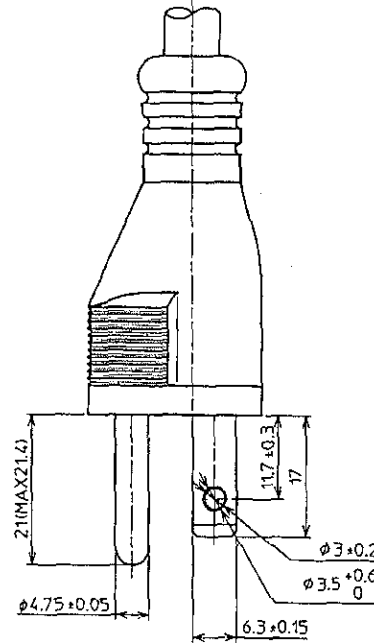
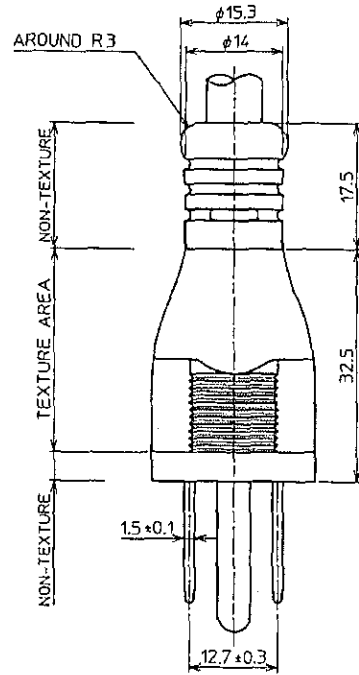
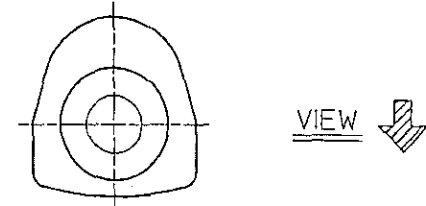


IT	NAME	MATERIAL	REMARK
1	CORD	HVCTF,HVCTFS 3x2.0mm <sup>2</sup>	
2	BODY	PVC	
3	CONTACT BODY	C2680RC-1/2H MBNI	A-323A-354
4	EARTH FIN	C2680RC-1/2H MBNI	A-267A



NOTE  
 1. TEXTURE TO BE SNA-2 (YANAZAWA).  
 2. TEXTURE AREA AS INDICATED IN THE FIGURE.



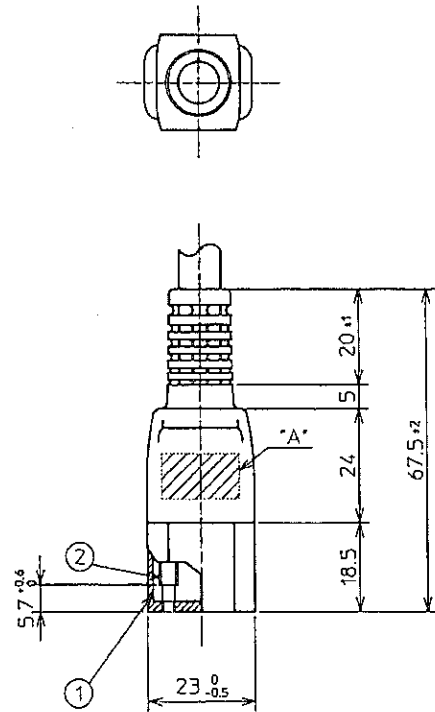
△△				
△△				
△△				
△△				
LET	REVISION	DATE	SIGN	



TOLERANCE		ANGLE	SCALE	UNIT	NAME
DIMENSION	TOL.	$\square$	1.5 : 1	mm	3P-PLUG
L $\leq$ 63	$\pm 0.5$				PART NO. VM1296A-C0
DR.	K.Marishita			DATE	Feb.27'03
CH.	I. Igarashi			DATE	Feb.27.03
APP.	<i>I. Igarashi</i>			DATE	Feb.27.03

NAME	3P-PLUG
PART NO.	VM1296A-C0
DRAWING NO.	MC1210CA

IT	NAME	MATERIAL	REMARK
1	INNER BASE	#66NYLON	C-485A
2	CONTACT SLEEVE	C5191R-1/2H 1-0.6	B-202A
3	BODY	PVC	
4	CORD	VCTF 3X2.0mm <sup>2</sup>	

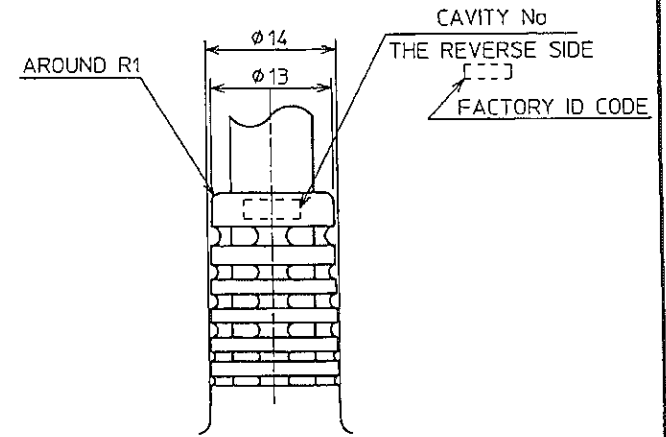
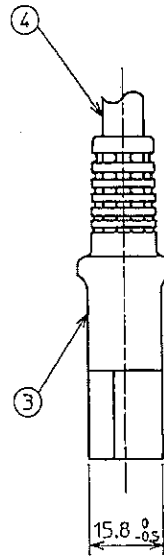


MARKING OF AREA "A"

15A 125V  
HEWTECH  
JET

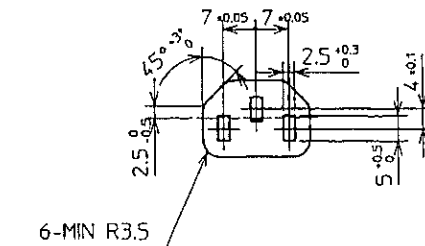
THE REVERSE SIDE  
MARKING OF AREA "A"

VM1708



DETAIL OF STRAIN RELIEF

2/1



△X				 HIRAKAWA HEWTECH CORP.	TOLERANCE		ANGLE	SCALE 1:1	UNIT mm	NAME
△X					DIMENSION	TOL.	DR. K.Morishita	DATE Mar. 5'03	3P-CONNECTOR	
△X					L ≤ 4	±0.2	CH. I. Igarashi	DATE Mar. 5. 03	PART NO. VM17080-80	
△X					4 < L ≤ 16	±0.3	APP. <i>I. Igarashi</i>	DATE Mar. 5. 03	DRAWING NO. MC1222CA	
△X					16 < L ≤ 63	±0.4		DATE Mar. 5. 03		
LET	REVISION	DATE	SIGN		63 < L	±0.5				